



# GMT MONTHLY MEMBERSHIP PROGRESS REPORT

Results as of: 6/30/2020

Multiple District 320

LOCATION: INDIA

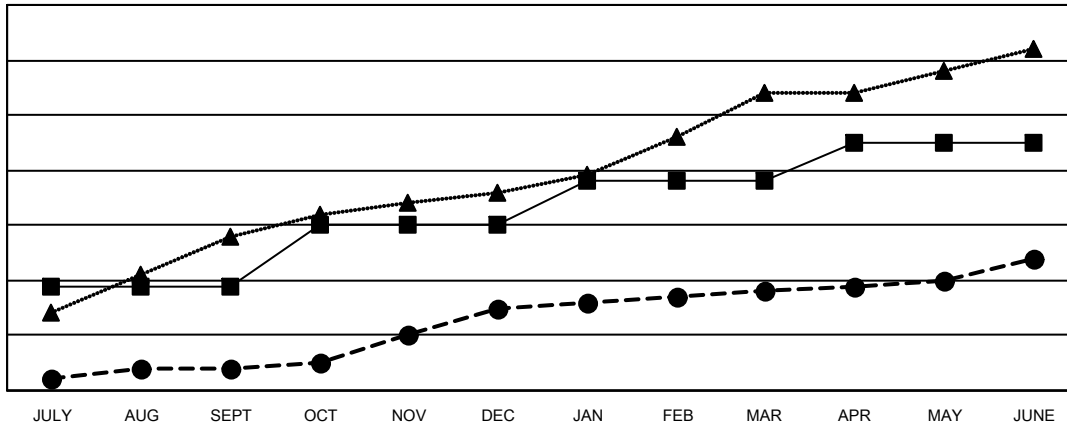
GMT: OPEN

GMT CA 6

Clubs			
RESULTS FOR 2019-2020			
QUARTER	NEW CLUB GOAL	NEW CLUBS	DROPPED CLUBS
JULY/AUG/SEPT	19	4	3
OCT/NOV/DEC	11	11	13
JAN/FEB/MAR	8	3	6
APR/MAY/JUNE	7	6	10

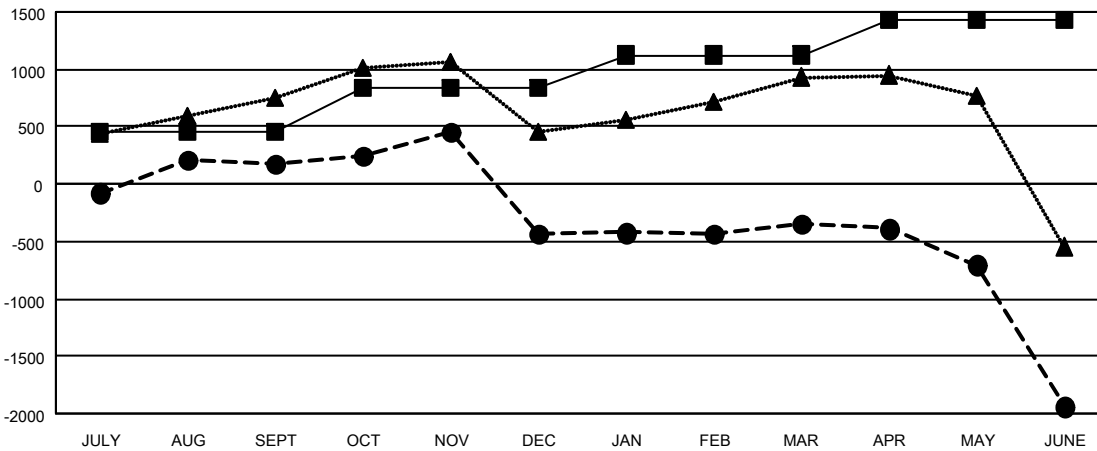
Members			
RESULTS FOR 2019-2020			
QUARTER	MEMBER GROWTH NET GOAL	MEMBER GROWTH ACTUAL	DROPPED MEMBERS ACTUAL (including transfers)
JULY/AUG/SEPT	450	791	577
OCT/NOV/DEC	395	735	1,253
JAN/FEB/MAR	280	517	325
APR/MAY/JUNE	305	667	2,072

**GOALS AND ACTUAL NEW CLUBS CUMULATIVE**



- - CURRENT YEAR GOALS FOR NEW CLUBS
- - CURRENT YEAR ACTUAL NEW CLUBS
- ▲ - LAST YEAR ACTUAL NEW CLUBS

**GOALS AND ACTUAL MEMBERS CUMULATIVE**



- - MEMBER GROWTH NET GOAL
- - MEMBER GROWTH ACTUAL
- ▲ - LAST YEAR MEMBERSHIP ACTUAL

<b>DROPPED CLUBS: 29</b>	<b>334 CLUBS OF 516 ADDED 1 OR MORE NEW MEMBERS</b>	<b>GENDER DISTRIBUTION</b> MALE 12,564 (75.04%) FEMALE 4,180 (24.96%)
<b>DROPPED MEMBERS</b> DECEASED 63 CLUB CANCELLED 337 OTHER 3,827 <b>TOTAL 4,227</b>	<a href="#">CLICK HERE FOR CUMULATIVE MEMBERSHIP DATA</a>	TOTAL FAMILY UNIT MEMBERS 7,470 FAMILY MEMBERS PAYING HALF DUES 4,182